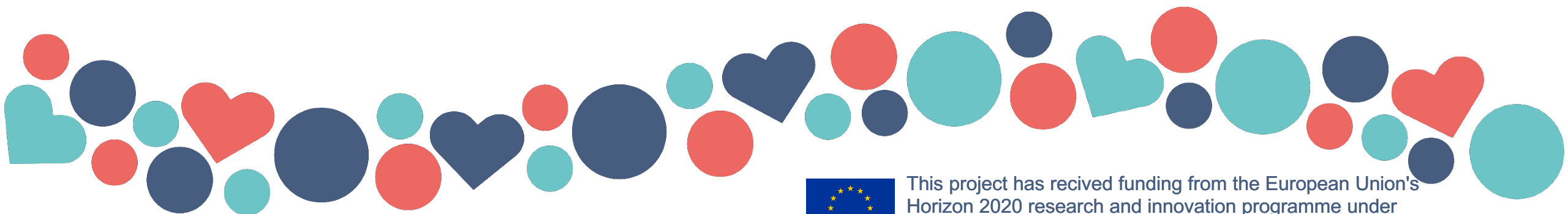
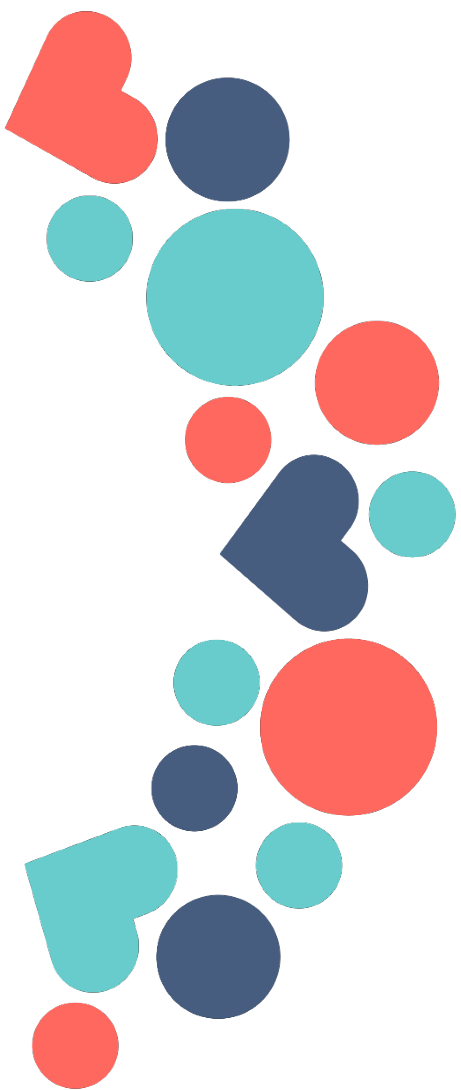




PROJECT OVERVIEW



This project has received funding from the European Union's Horizon 2020 research and innovation programme under **Grant Agreement 965356**



TIQUE Consortium

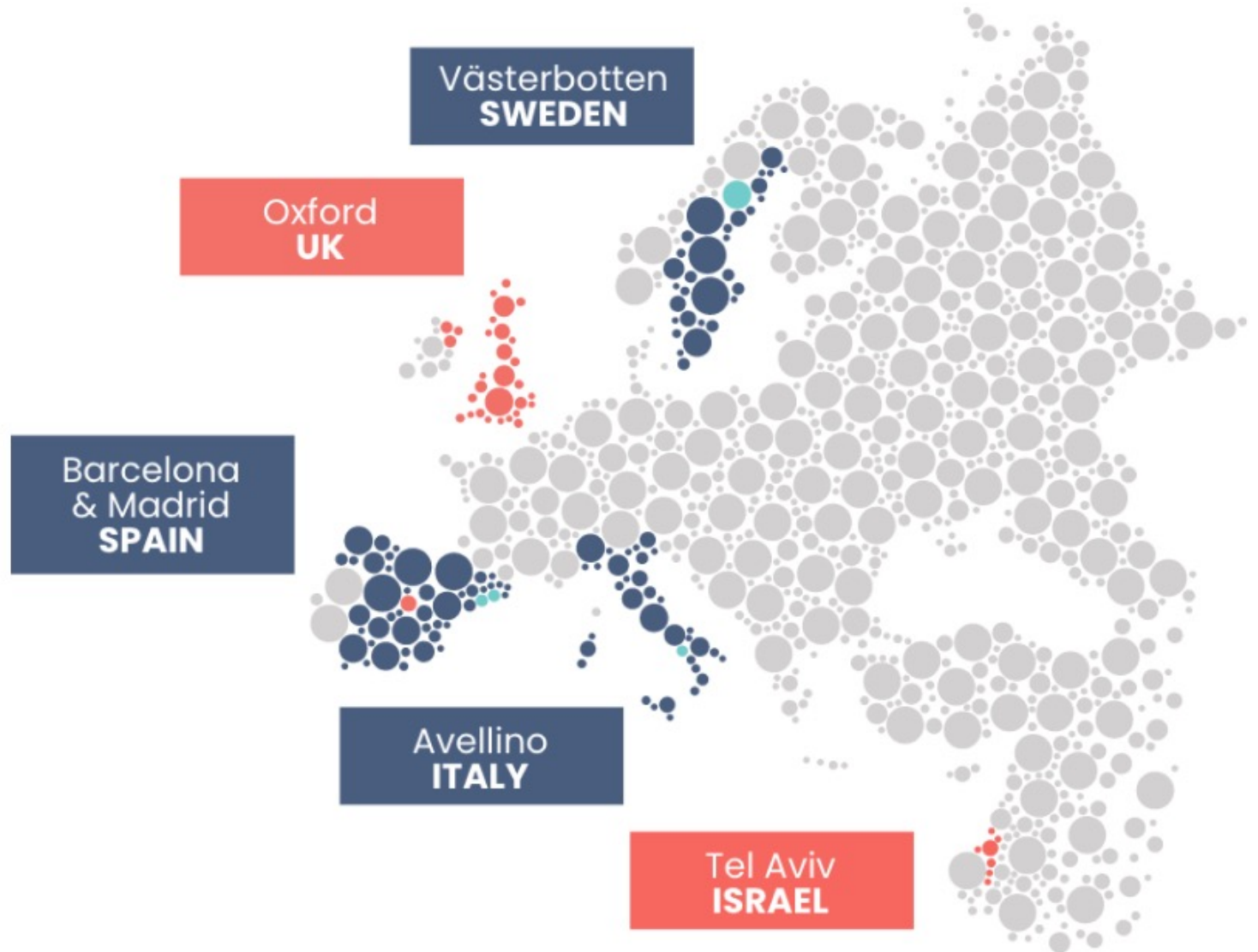
3 buyers and
8 partners



BUYERS



PARTNERS



3 Procurers



Hospital de la Santa Creu i Sant Pau

One of the four Tertiary Hospitals in Catalonia with:

Reference area of **> 400.000 people in Barcelona City.**
Almost ¼ Barcelona City population

Highly dense about 4.000 inhabitants/ Km²

23 % people > 65 years old

Specialised care not integrated with Primary Care nor with social care.



Azienda Sanitaria Locale Avellino

The Public health care services organisation in Avellino, Campania Region with:

Reference area of **> 400.000 people in Avellino**

Low dense around 144.68 inhabitants/ Km²

28 % people > 65 years old

Specialised care Integrated with Primary Care and social care.



Region Västerbotten

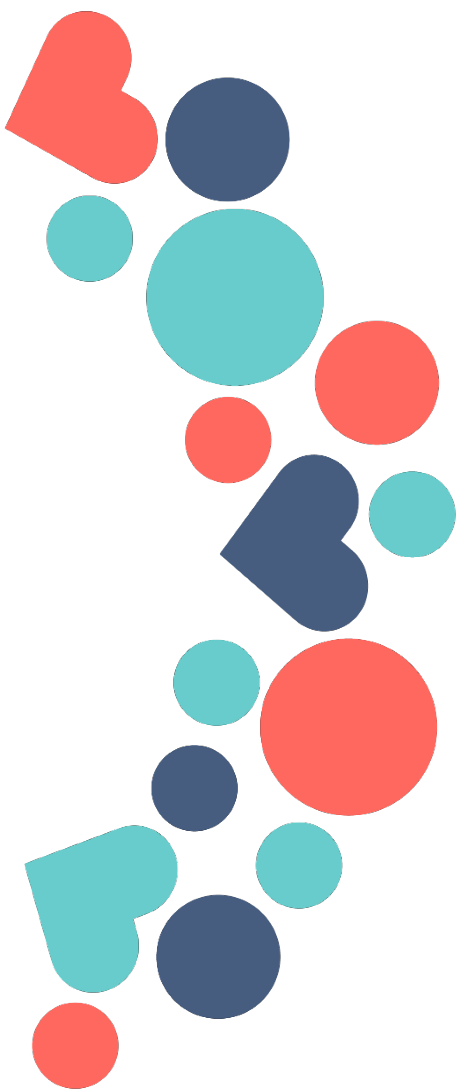
South Lapland consisting of 7 sparsely populated municipalities with:

Reference area **> 36,000 people (268,000)**

Low density about 1-2 inhabitants/km² (4.6)

27 % (21%) people > 65 years old

Specialised care Integrated with Primary Care but not integrated with social care.
(Numbers in parentheses are total for Västerbotten)



TIQUE Challenge

PRE-COMMERCIAL PROCUREMENT of

Innova**T**ive care services to
deliver **Q**uick r**E**sponses to
complex patients with
advanced heart failure through
integrated care

More than

15m



people in Europe are estimated
to be living with heart failure

Heart failure

is a major cause of hospitalisations
and contributes to almost

2m admissions
a year
in Europe

Heart failure healthcare cost over

€15bn



in 2012 in the 11 countries in this project combined

Hospital admissions
for heart failure have
been projected to rise by

50%

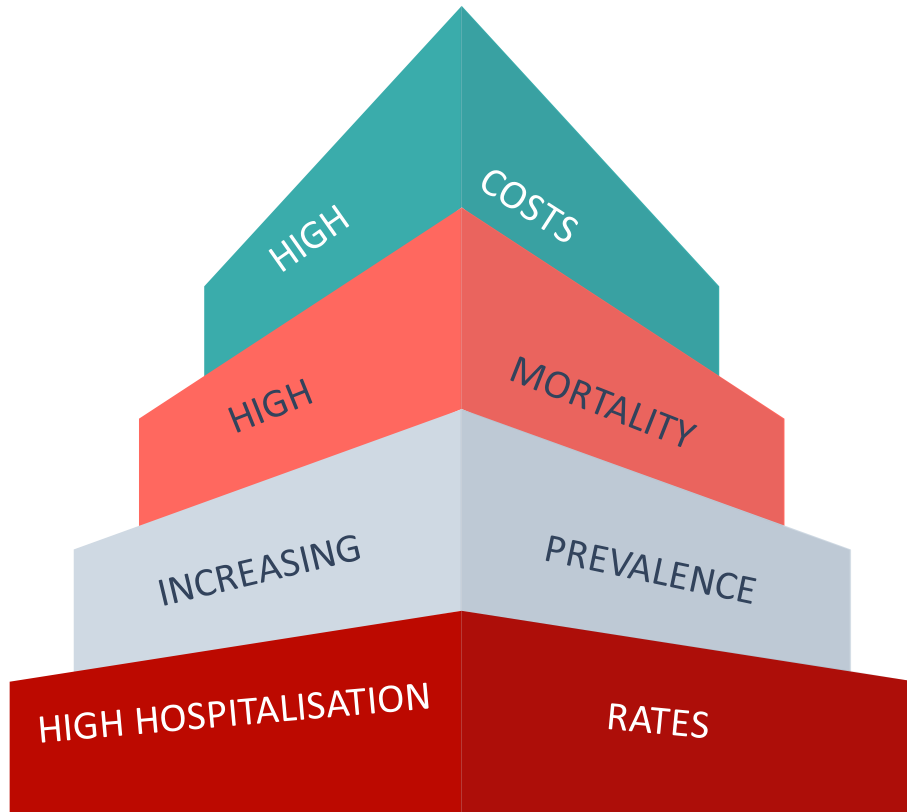
between 2010 and 2035

Best-practice care models have
the potential to reduce heart failure
hospitalisations and costs by up to

30%

Source: Heart Failure Policy Network. 2020. Heart failure policy and practice in Europe. London: HFPPN

The increasing burden of Advanced Heart Failure



> 50% of Health expenditure in the last 6 months of life

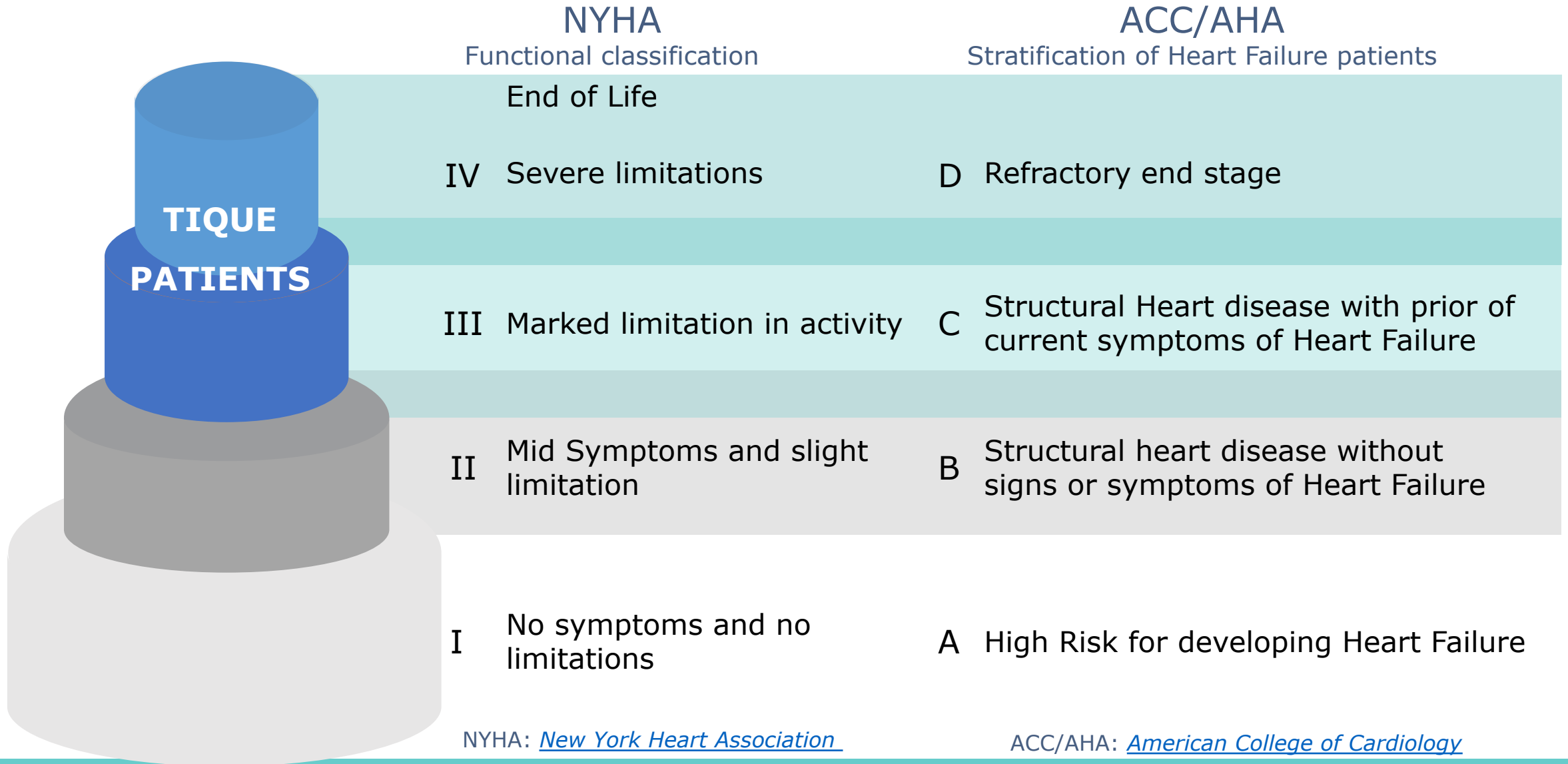
It is the leading cause of death in people > 65 years

62 Million people living with heart failure in the world

75% mortality at 5 years of 1st admission

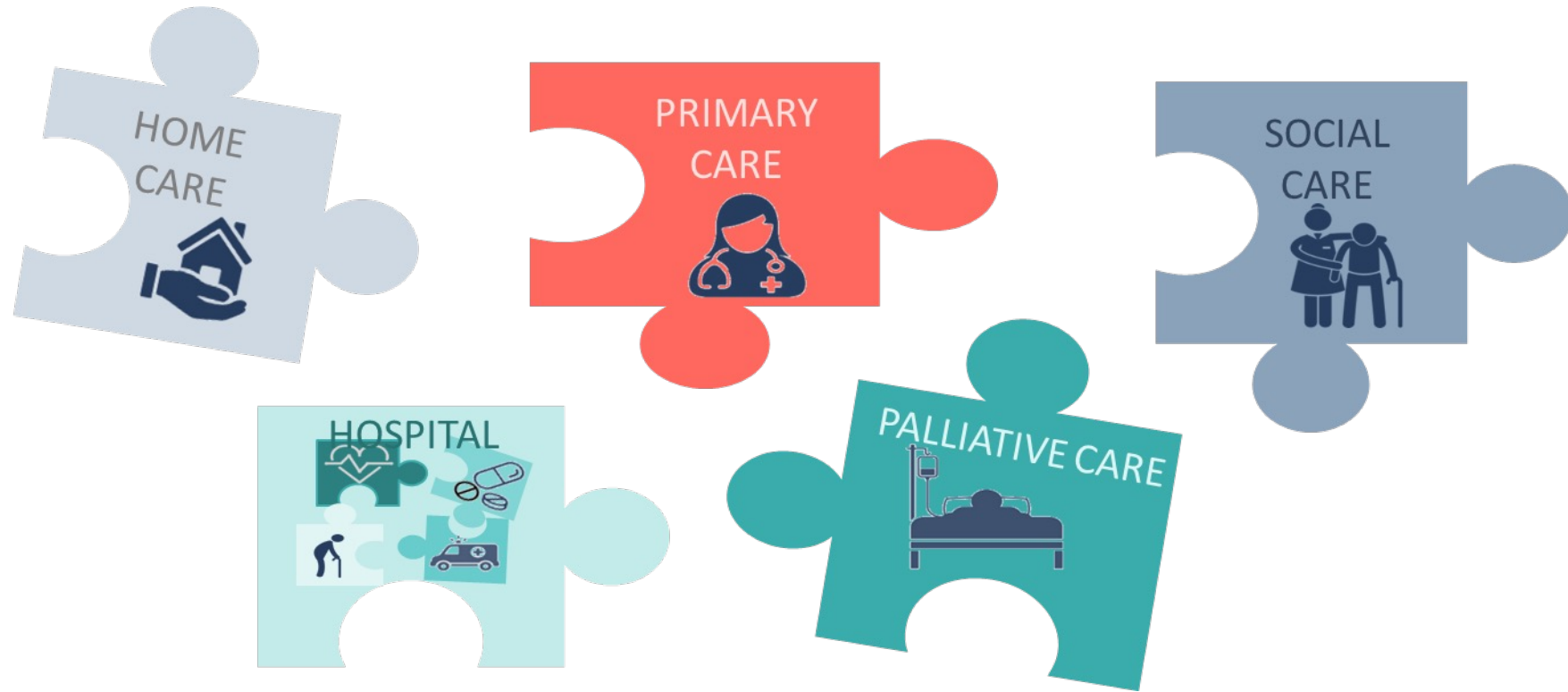
Although clinical practice guidelines are up-to-date and being followed by cardiologists ...

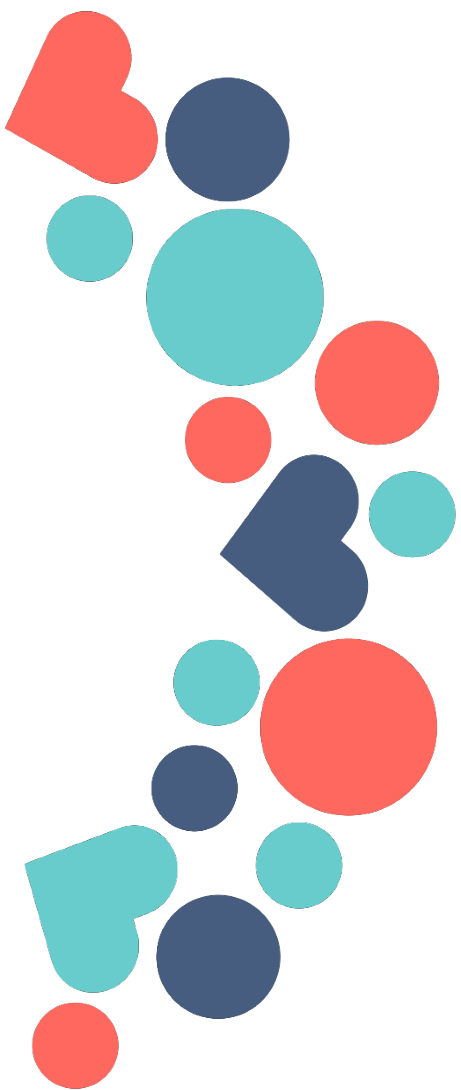
TIQUE Target



The unmet needs

To improve quality and efficiency
in the management of advanced heart failure patients through the provision of
personalized care at all times, in a timely manner, in the best setting and in
accordance with the patient's wishes





Objectives & approach

The aim

The TIQUE Buyers Group of healthcare providers have identified a common unmet need for the **transformation of health and care services** for patients.

Solutions to implement **integrated care approaches supported by digital tools** to deliver treatment to patients with **advanced heart failure** who may have co-existing chronic conditions, frail or at risk of becoming frail.

The TIQUE whole Innovation Process

*Call for tenders
preparation*

PHASE 0
Preparation

*Curiosity driven
research*

Applied R&D Services – PRE-COMMERCIAL PROCUREMENT (PCP)

PHASE 1
Solution design

SUPLIER 1

SUPLIER 2

SUPLIER 3

SUPLIER 4

PHASE 2
Prototype
development

SUPLIER 1

SUPLIER 3

SUPLIER 4

PHASE 3
Pilot testing

*Pre-Commercial small
scale solution
deployment*

SUPLIER 3

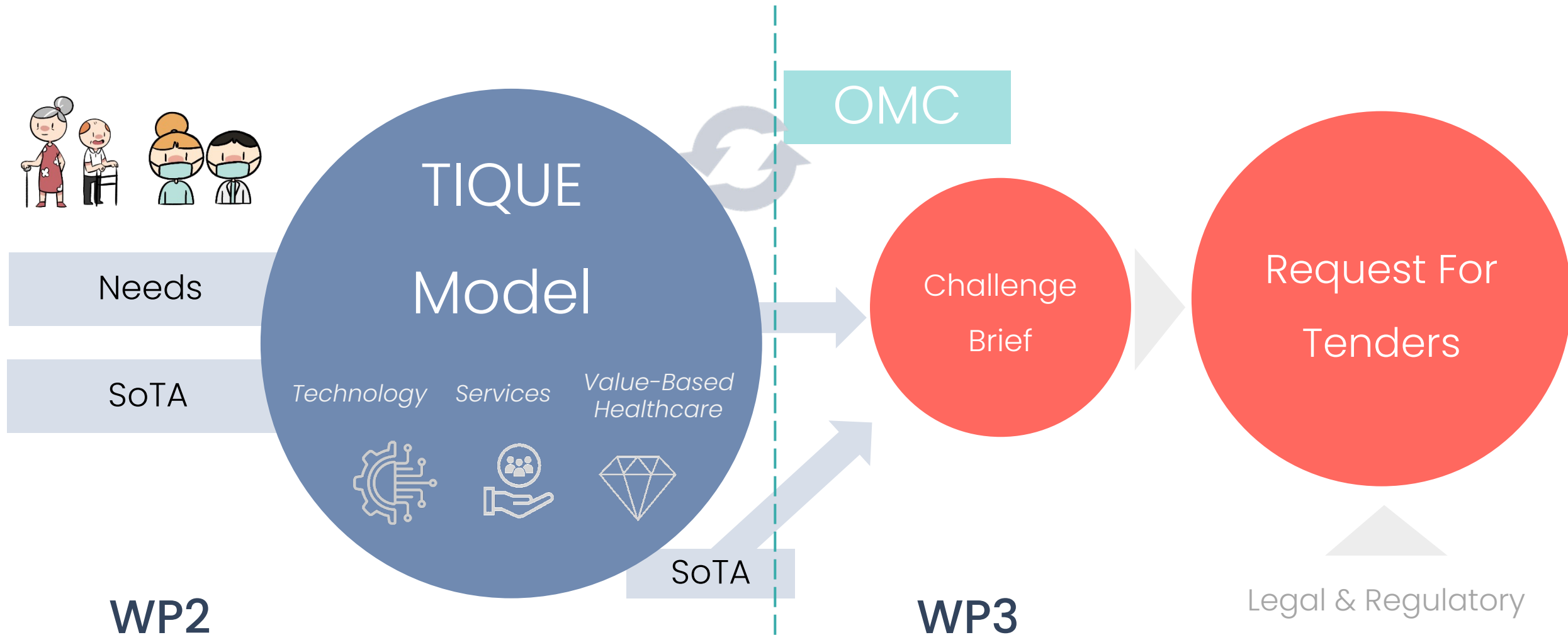
SUPLIER 4

*Public procurement
of innovative
solutions*

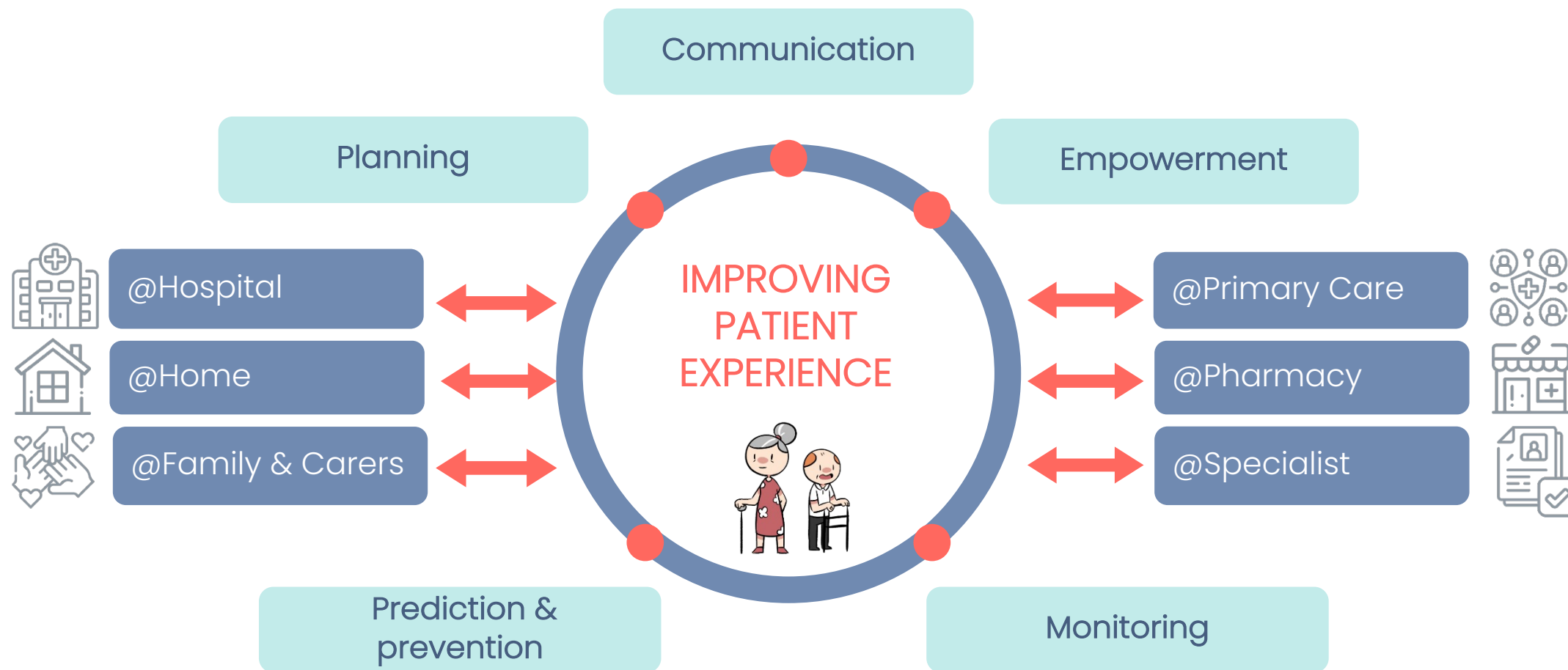
PHASE 4
Commercial
deployment



Overall Planning of Phase 0 (PCP Preparation)



The core of the TIQUE Challenge

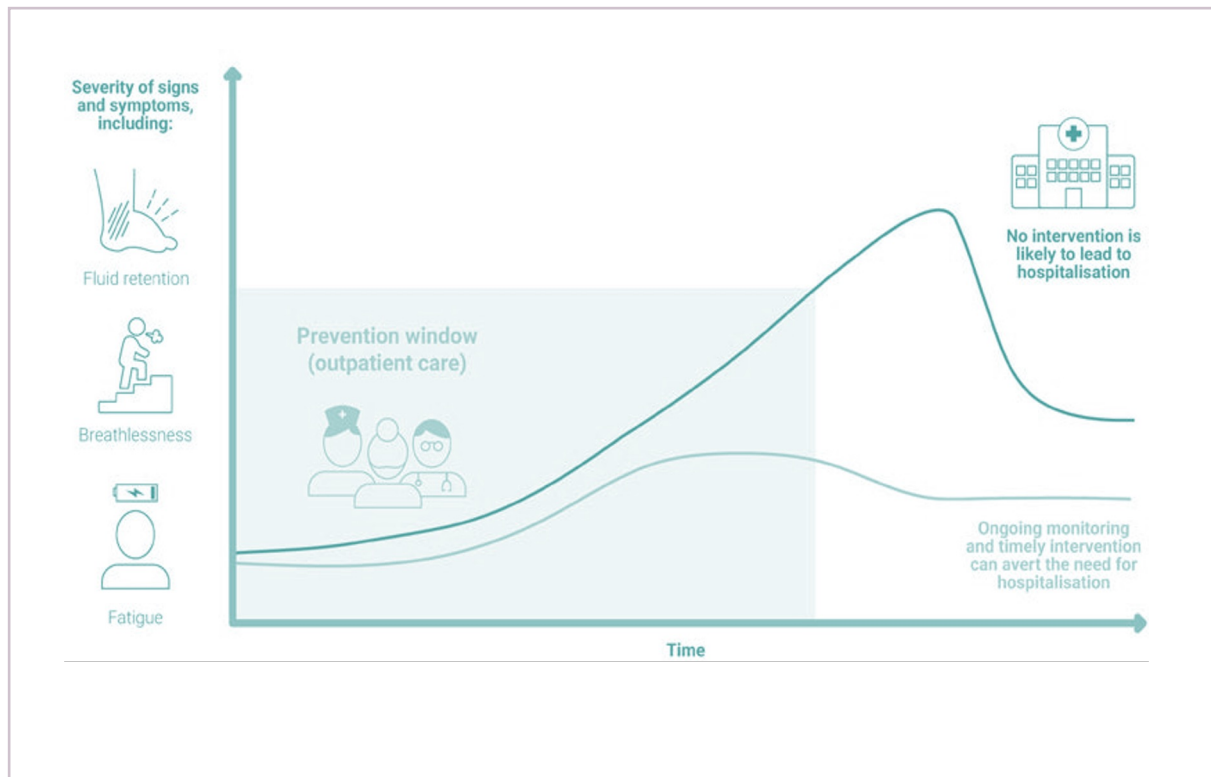


To provide **personalized** care at **all times**, in a **timely** manner, in the **best setting** and in accordance with the **patient's wishes**.

The way forward

“Early detection of worsening heart failure offers a window of opportunity to prevent hospitalisations”

Heart Failure Policy Network (HFPN) 2022. Spotlight on worsening heart failure. London: HFPN



The window to prevent hospitalisations when signs and symptoms show deterioration

Key actions to be taken ...

1

Increase awareness & recognition

2

Focus on health maintenance for people living with

3

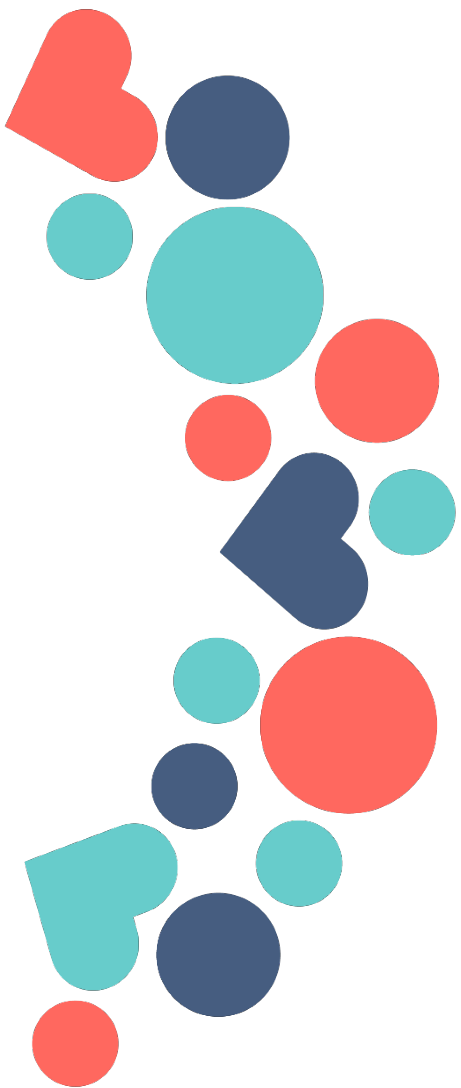
Encourage management outside the hospital

4

Improve access to advanced diagnostic tools & guideline-recommended treatments

5

Accredit and fund Heart Failure specialist nurses



Overall progress

CALL IS OPEN

- Opened 31st of May
- Published at the Public Procurement Platform of Catalonia.
- Find also TIQUE tender documents at our website:
<https://www.tiquepcp.eu/ca/web/tique/tender-documents>
- Closes 15th of September 2022
- Two live workshops to clarify any doubts related to the tender:
 - 30th of June 2022
 - 15th of July 2022

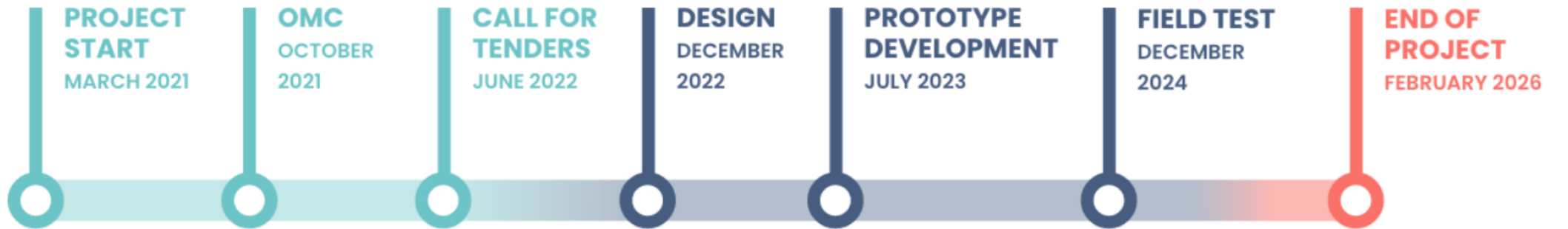
Stay tuned through our website: www.tiquepcp.eu

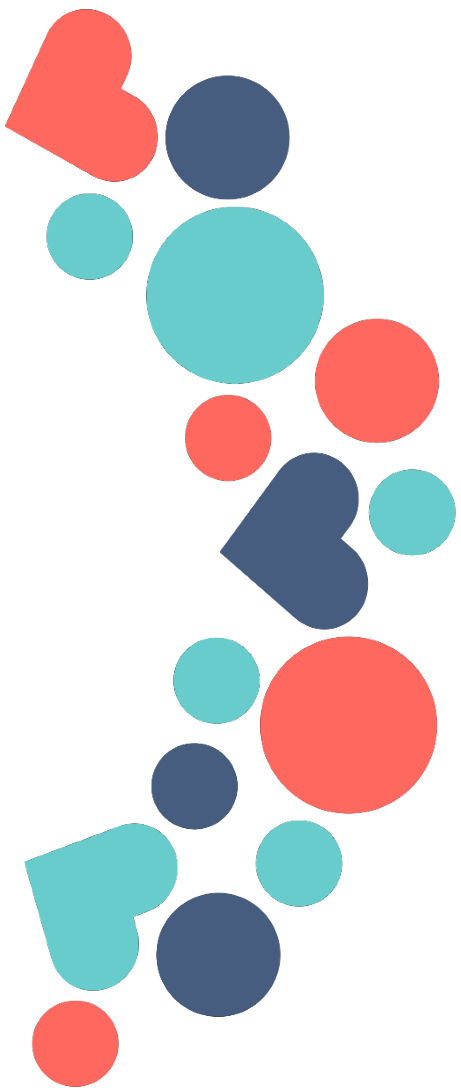
The roadmap of the project

PREPARATION STAGE

EXECUTION STAGE

FINAL RESULTS





The PCP Process

PROCESS OVERVIEW

PHASE 0 Preparation

Curiosity driven
research

PHASE 1 Solution design

SUPLIER 1

SUPLIER 2

SUPLIER 3

SUPLIER 4

Maximum total
Budget:
€120,000 (21%
VAT incl.)

PHASE 2 Prototype development

SUPLIER 1

SUPLIER 3

SUPLIER 4

Maximum total
Budget:
€1,350,000 (21%
VAT incl.)

PHASE 3 Pilot testing *Pre-Commercial small scale solution deployment*

SUPLIER 3

SUPLIER 4

Maximum total
Budget:
€3,959,075
(21% VAT incl.)

PHASE 4 Commercial deployment

CALL IS OPEN

- Opened 31st of May
- Published at the Public Procurement Platform of Catalonia.
- Find also TIQUE tender documents at our website:
<https://www.tiquepcp.eu/ca/web/tique/tender-documents>
- Closes 15th of September 2022
- Two live workshops to clarify any doubts related to the tender:
 - 30th of June 2022
 - 15th of July 2022

Stay tuned through our website: www.tiquepcp.eu

